

PowerMic Mobile Tip Sheet for Android Phones



Audience: Providers

Before you begin, make sure you have your Google account information ready. You must have a Google account to download the PowerMic Mobile app from the Google Play store.

Need to set up a Google account or forgot your password? Review these resources:

- [Add a Google Account on Your Device](#)
- [Google Account Help](#) (select your issue – e.g., forgot password or username)

As always, please respect patient confidentiality by being mindful of your surroundings when dictating.

1. Download the PowerMic Mobile app.

o **Android:** (Requires Android 4.0 or greater): [Click here to download the Android app](#)



Tap Install

2. After PowerMic Mobile is downloaded, push your phone's home button. Navigate to the PowerMic Mobile tip sheet you received via email to access the following link on your phone. Tap on this link to configure PowerMic Mobile:

http://config_?NmsToken=OEZFRDNEQ00tNjIzNi000TEwLUFGNjktRTc3RkQxQOTRCNDMw

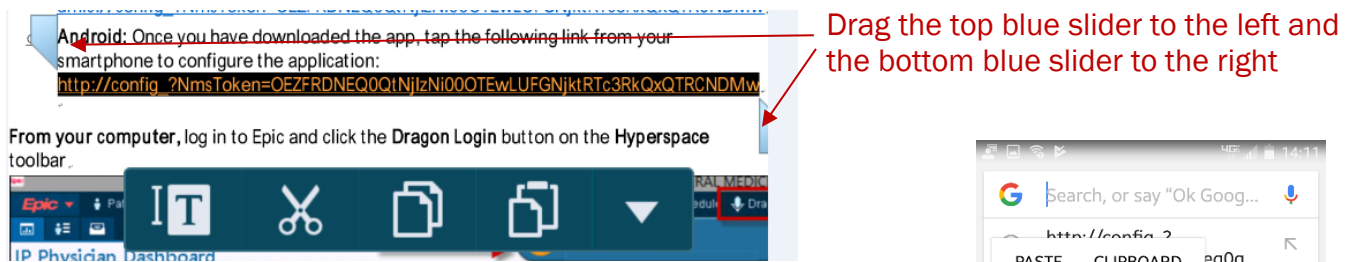


Select the home button

PowerMic Mobile Tip Sheet for Android Phones

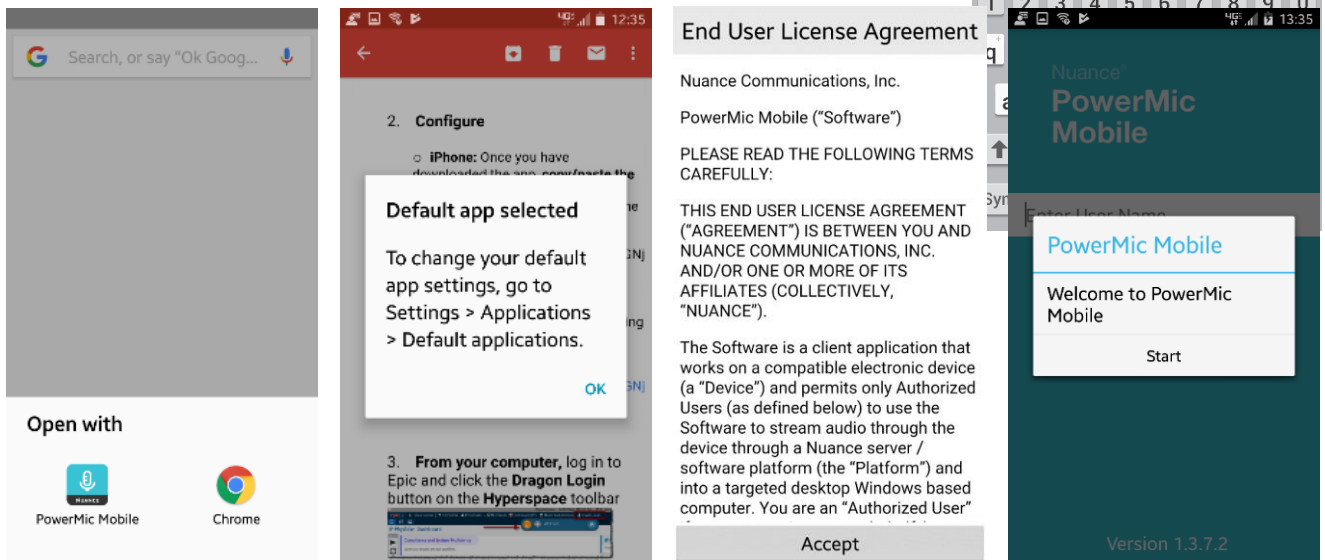


Note: You must view the above link on your mobile device. If you're unable to configure the app by tapping on the link, you'll have to copy and paste this link into your phone's browser address bar. To copy the link, press and hold your pointer finger in the middle of the link on your phone screen. Then, release your finger. Drag the set of blue handles across the text to highlight the entire link. Once the entire link is selected, tap **Copy**.



Then, navigate to your desired browser (e.g., Google Chrome) and press and hold your finger until you see the option to paste. Tap **Paste** and then tap **Search** (magnifying glass).

3. Tap **Open with PowerMic Mobile**. Select **OK** on the **Default app** selected pop-up. Accept the **License Agreement**. Tap **Start**.

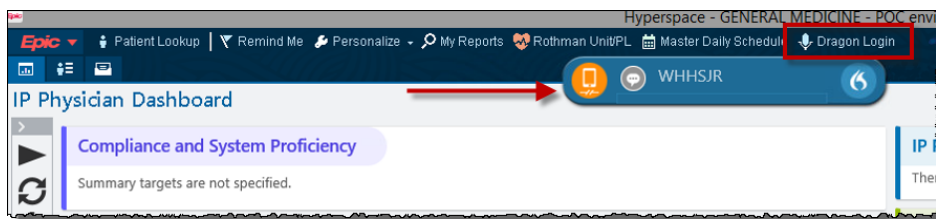


PowerMic Mobile Tip Sheet for Android Phones

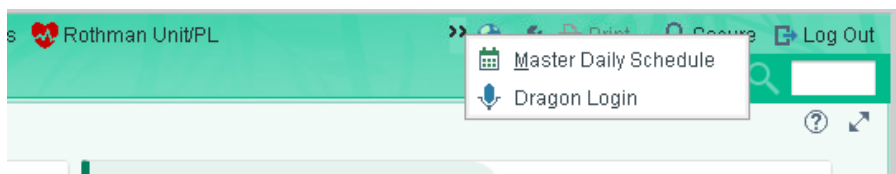


4. Enter your Houston Methodist Network ID and tap **Log In**. The PowerMic Mobile app will begin searching for a workstation to pair to. You'll be prompted to allow PowerMic Mobile to record audio. When this prompt displays, click **Allow**.
5. Make sure you're logged in to Epic. Select the **Dragon Login** button from the **Hyperspace** toolbar.

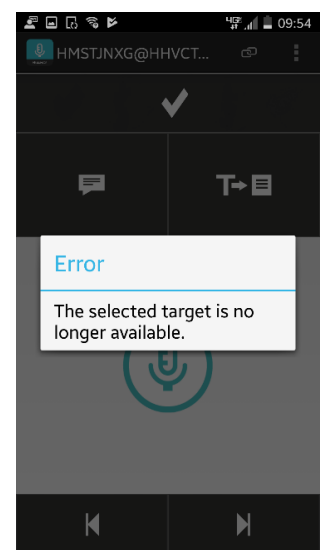
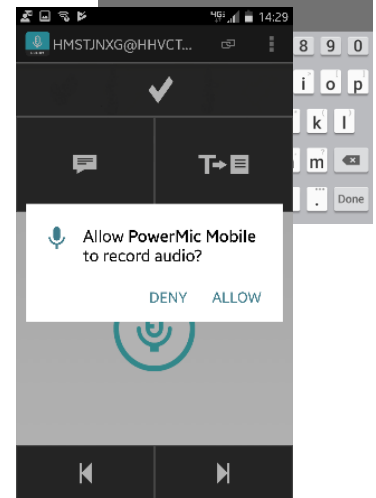
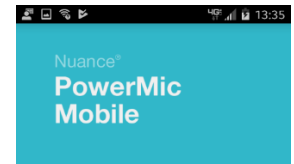
Note: The Dragon Bar can take 45 seconds to be visible.



Note: You may have to select the chevrons on the right side of the Hyperspace toolbar if you don't see the Dragon Login button.



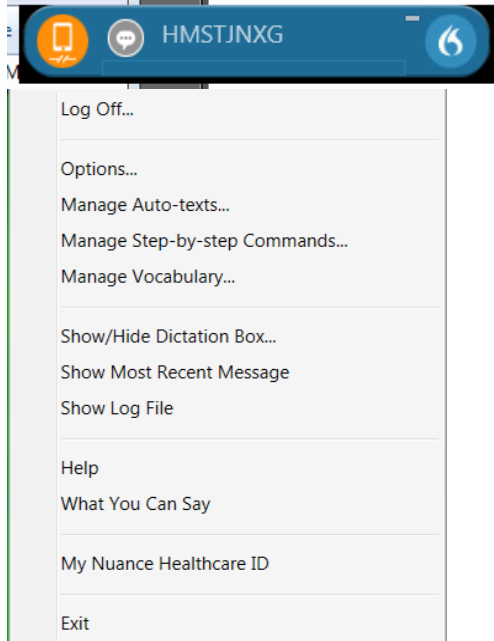
- If you get the error message to the right, select the microphone button and retry dictating.



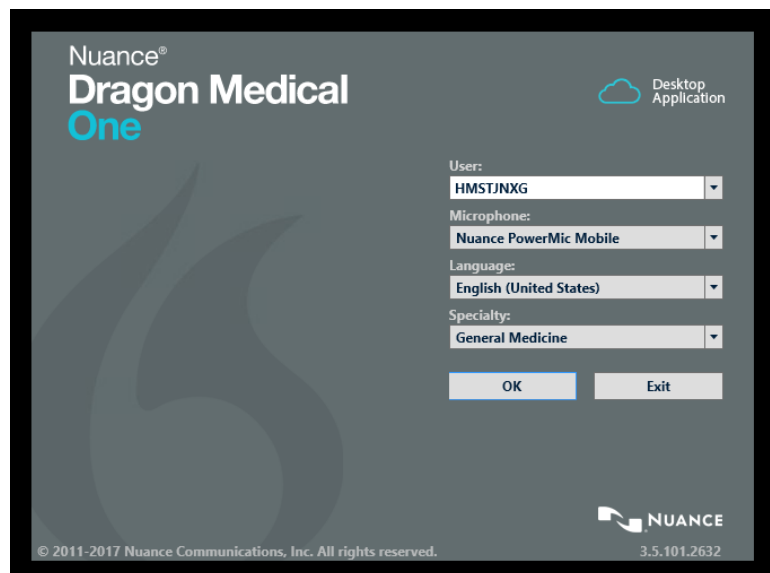
PowerMic Mobile Tip Sheet for Android Phones



- To change your microphone source from your phone to a standard PowerMic III microphone:
 - Select the dragon flame icon on the right side of the **Dragon Bar** and select **Log Off**.



- Log back in by clicking the **Dragon Login** button from the **Hyperspace** toolbar.
- Change the microphone source by selecting the appropriate option from the **Microphone** dropdown menu.



Note: If you don't see the Dragon Medical One login screen on your workstation, you may find it on the taskbar at the bottom of the screen.

